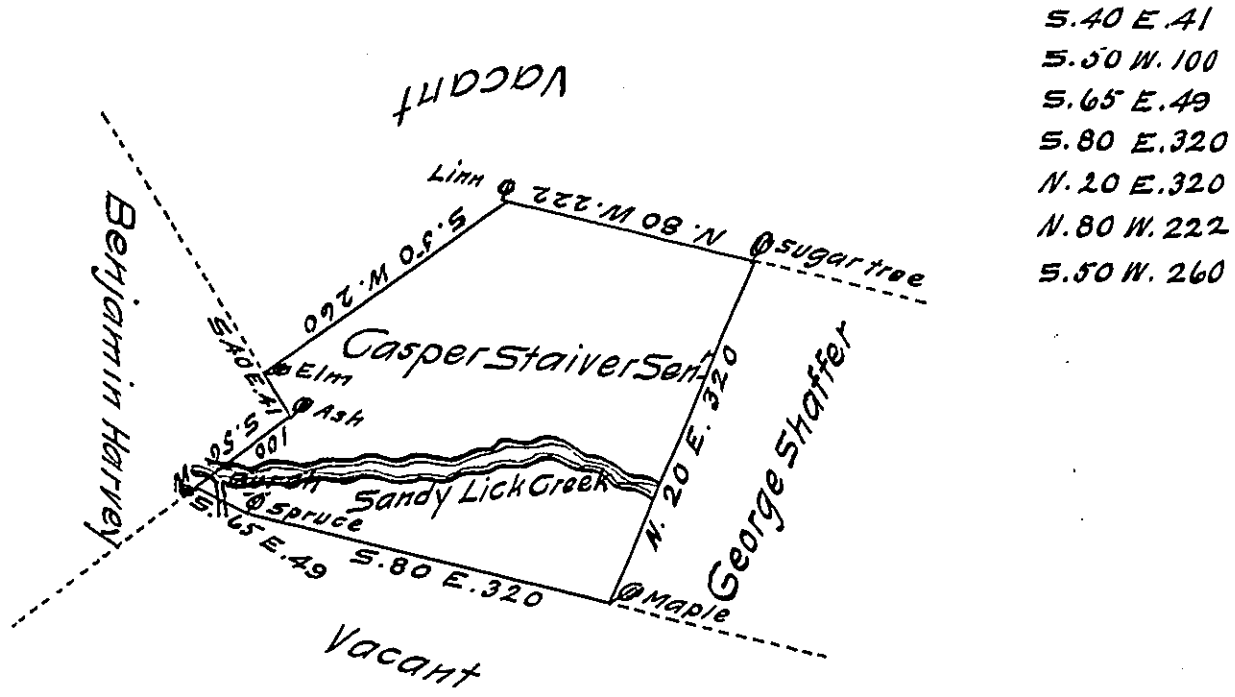


Scale of 200 perches to an inch



A Draught of a tract of land situate on Sandy Lick Creek in the County of Northumberland containing 572 acres and allowance of six acres per cent. Surveyed the 1<sup>st</sup> day of August 1785 for Casper Staiver Sen<sup>r</sup> in pursuance of a warrant No 276 bearing date the 17<sup>th</sup> day of May Anno Domini 1785.

by Richard Sherer D.S.

To John Lukens Esquire }  
Surveyor General }

~~New Lycoming County~~

IN TESTIMONY that the above is a copy of the original remaining on file in the Department of Internal Affairs of Pennsylvania, made conformably to an Act of Assembly approved the 16th day of February, 1833, I have hereunto set my Hand and caused the Seal of said Department to be affixed at Harrisburg, this twenty sixth day of May 1911

*Henry Howell*  
Secretary of Internal Affairs.